

PTS7 – DOUBLE BARREL SNORKEL PLIERS

REMOVES, INSTALLS AND SETS DEPTH FOR BOTH TYPES OF SNORKEL TUBES

TWO SLOTS FOR SNORKEL TUBES –

One for triumph & PFM pens with diagonal front tip of snorkel tube

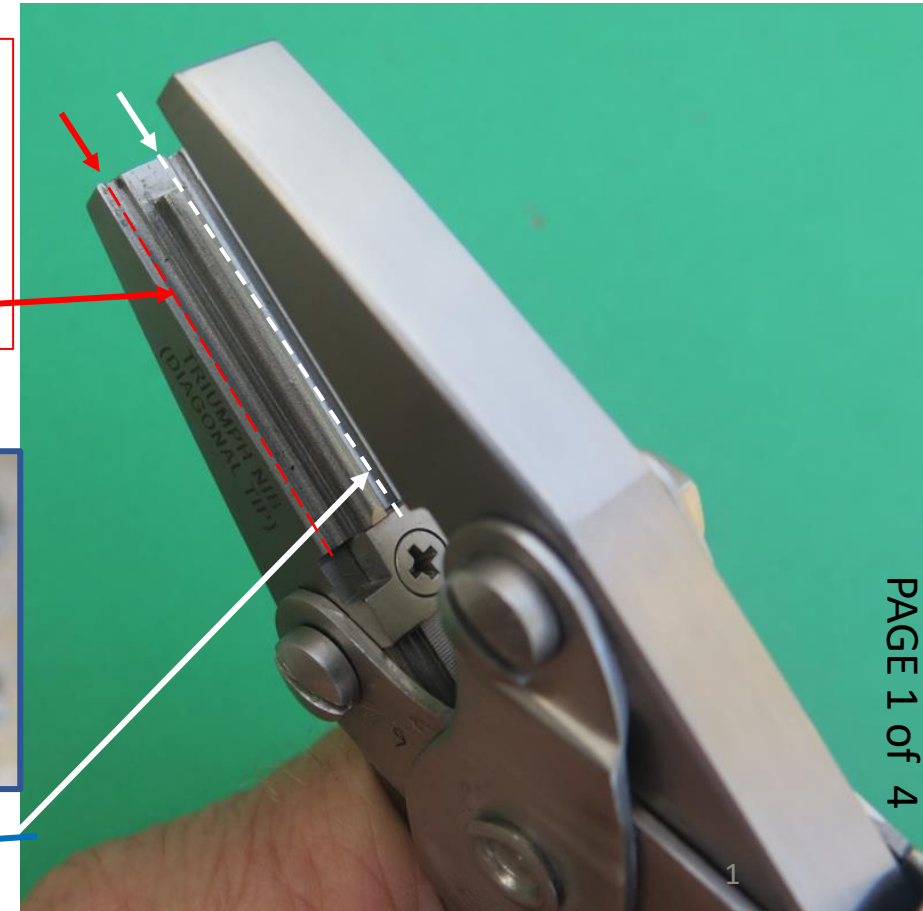
and

One for open nib pens with flat front tip on tube

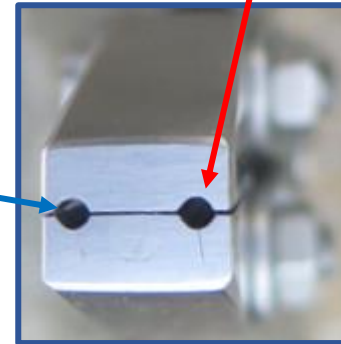
OPPOSITE SIDES OF THE SAME PAIR OF PLIERS



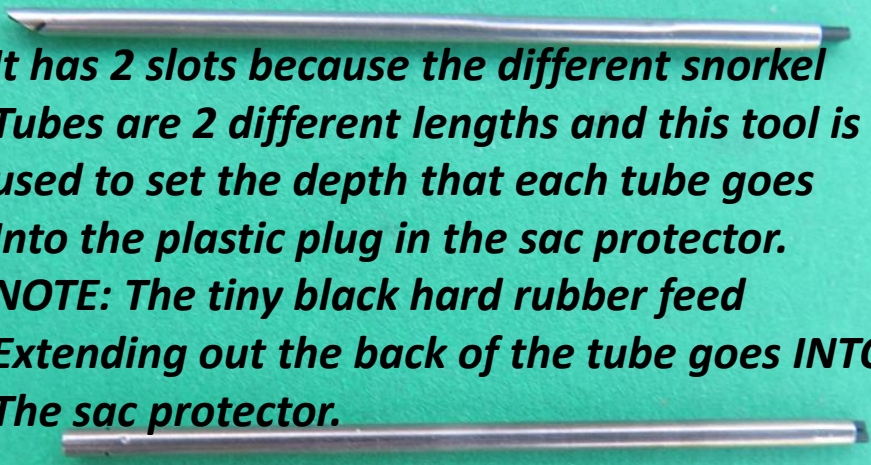
FLAT TIP SNORKEL TUBE GOES IN THIS SLOT




SNORKEL TUBE W/ DIAGONALLY CUT TIP GOES IN THIS SLOT



It has 2 slots because the different snorkel Tubes are 2 different lengths and this tool is used to set the depth that each tube goes into the plastic plug in the sac protector. NOTE: The tiny black hard rubber feed Extending out the back of the tube goes INTO The sac protector.





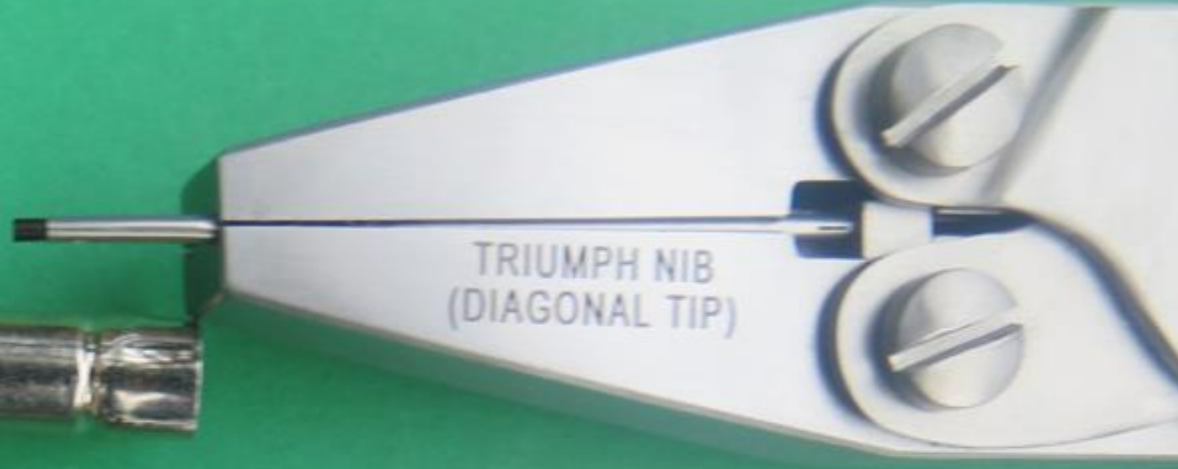
TRIUMPH / PFM PEN, DIAGONALLY CUT
SNORKEL TUBE AND THE APPROPRIATE
SIDE OF THE PLIERS FOR THIS TUBE
ARE SHOWN HERE

*THIS PHOTO SHOWS TWO SIDES OF ONE
UNIT
OF PTS7 PLIERS.*



OPEN NIB PEN, FLAT TIP SNORKEL TUBE
AND THE PROPER SIDE OF THE PLIERS
FOR THIS TUBE ARE
SHOWN HERE

The diagonally cut snorkel tip from pens with Triumph or PFM nibs goes INTO the slot on the side marked "TRIUMPH NIB (DIAGONAL TIP)".



NOTE: THE TINY BLACK FEED ON THE TUBES GOES INTO THE FRONT OF THE SAC PROTECTOR

THE TUBES ARE SEATED INTO THE BOTTOMS OF THE SLOTS HERE, SHOWING HOW FAR THE RESPECTIVE SNORKEL TUBES WILL BE INSERTED INTO THEIR SAC PROTECTORS. THIS PHOTO SHOWS TWO SIDES OF ONE UNIT OF PTS7 PLIERS.

AFTER THE TUBES ARE SEATED IN BOTTOMS OF SLOTS, THE REMAINING LENGTH PROJECTING OUT THE FRONT IS THE LENGTH NEEDED TO GO INTO THE SAC PROTECTOR

The flat cut snorkel tip from pens with older style open nibs goes into the slot on the side marked "OPEN NIB (FLAT TIP)".



BOTH SIDES OF DIAGONALLY CUT SNORKEL ARE SHOWN HERE, PROPERLY INSTALLED

BLACK TIP OF SNORKEL FEED
DOES NOT GO INTO JAWS.
IT GOES INTO SAC
PROTECTOR FRONT

HOLE. THIS TIP IS
VERY FRAGILE



DIAGONALLY CUT SIDE OF SNORKEL IS SHOWN HERE, SEATED ON ITS STOP. THIS END OF SNORKEL IS ALSO VERY FRAGILE AND MUST BE **GENTLY** FITTED INTO ITS GROOVE AND GENTLY SEATED ONTO ITS STOP BEFORE SQUEEZING HANDLES AND PUSHING SNORKEL INTO PLASTIC PLUG ON SAC PROTECTOR FRONT.

DOs & DON'Ts WHEN USING THIS TOOL

BEFORE SQUEEZING AND PUSHING, THE TUBE SHOULD **GENTLY** BE VERIFIED TO BE CENTERED IN ITS SLOT AND ALL THE WAY IN, UP AGAINST THE STOP. ANY MISALIGNMENT OF THE SLOTS AND TUBES OR FORCING AGAINST THE REAR STOPS CAN CRUSH THE SNORKEL TUBE WHEN YOU SQUEEZE THE HANDLES AND PUSH ON THE TUBE TO INSERT IT INTO THE SAC PROTECTOR. THE DIAGONAL END OF THE SNORKEL TUBE CAN BE CHECKED FOR PROPER SEATING ON ITS STOP THROUGH THE WINDOW AT THE BACK OF ITS SLOT.

SPINNING WITH FINGERS IS A GOOD WAY TO VERIFY ALIGNMENT BEFORE SQUEEZING. MAKE SURE OF THE ALIGNMENT BEFORE YOU SQUEEZE AND PUSH.

BELOW IS THE FLAT TIP
SNORKEL SEATED IN ITS SLOT.

